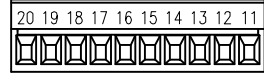
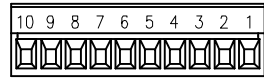
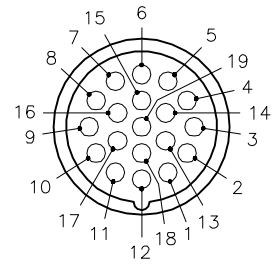


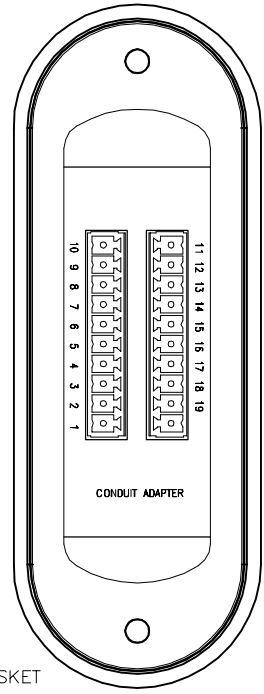
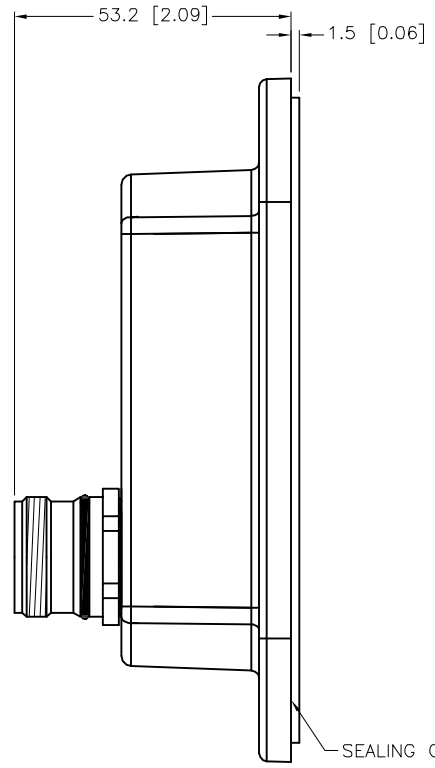
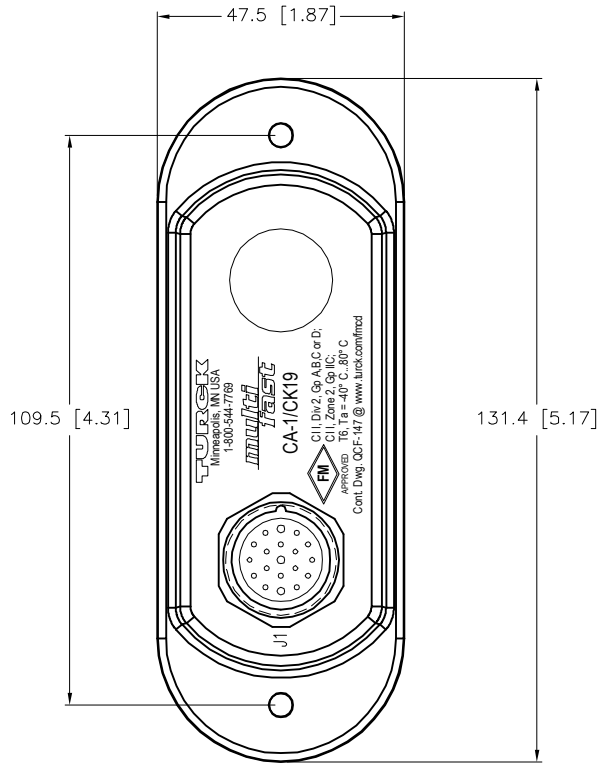
FEMALE END VIEW (J1)

TERMINAL BLOCK PLUGS

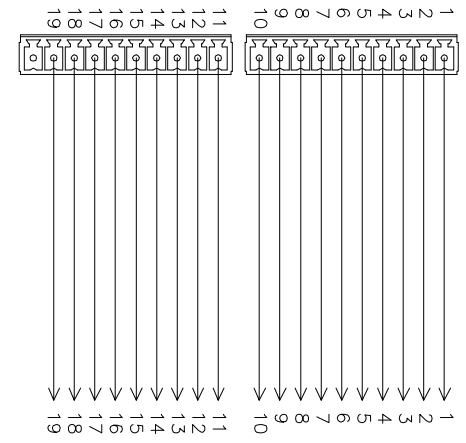
SPECIFICATIONS



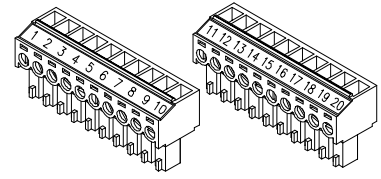
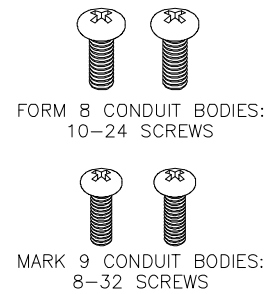
HOUSING MATERIAL/COLOR	NYLON 66 - 33% GLASS FILLED/BLACK
RECEPTACLE HOUSING MATERIAL/PLATING	BRASS/NICKEL
CONTACT CARRIER/COLOR	PBT OR NYLON/WHITE
CONTACT MATERIAL/PLATING	BRASS/GOLD
OPERATING VOLTAGE	150 V
OPERATING CURRENT	4 A (PINS 6,12,19) 3.0 A (ALL OTHERS)
PROTECTION CLASS to DIN 40050	IP 67 - ONLY WHEN ALL RECEPTACLES ARE COVERED WITH PLUGS OR CONNECTED
OPERATING TEMPERATURE	-30°C to +80°C (-22°F to +176°F)



WIRING DIAGRAM



COVER SCREWS INCLUDED



TERMINAL PLUGS INCLUDED

SOURCE DRAWING - FOR REFERENCE ONLY

RELATED DOCUMENTS 1. 2. 3. 4.	3RD ANGLE PROJECTION 	THIS DRAWING IS CONFIDENTIAL AND THE PROPERTY OF TURCK INC. USE OF THIS DOCUMENT WITHOUT WRITTEN PERMISSION IS PROHIBITED.		3000 CAMPUS DRIVE MINNEAPOLIS, MN 55441 1-800-544-7769 (763) 553-7300 (763) 553-0708 fax www.turck.us	
		MATERIAL	DRFT GC APVD GC	DATE 07/09/03 SCALE 1=1.5	DESCRIPTION CA-1/CK19
FINISH	ALL DIMENSIONS DISPLAYED ON THIS DRAWING ARE FOR REFERENCE ONLY  CONTACT TURCK FOR MORE INFORMATION	UNIT OF MEASUREMENT <b>MILLIMETER [ INCH ]</b>		IDENTIFICATION NO. U0905-90	REV G
G UPDATED CLICHE REV DESCRIPTION		AS 10/21/25 BY DATE ECO NO.	DO NOT SCALE THIS DRAWING		FILE: U0905-90

